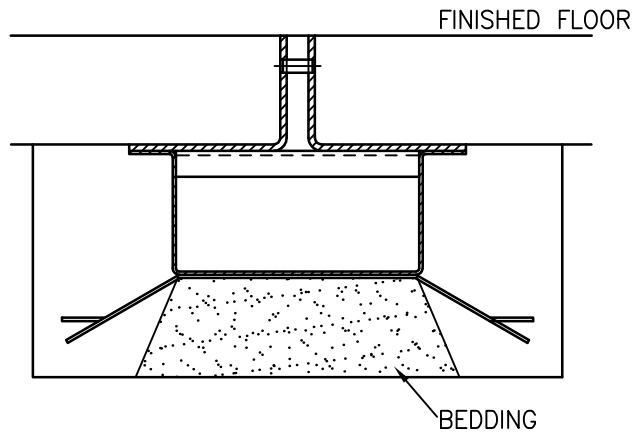


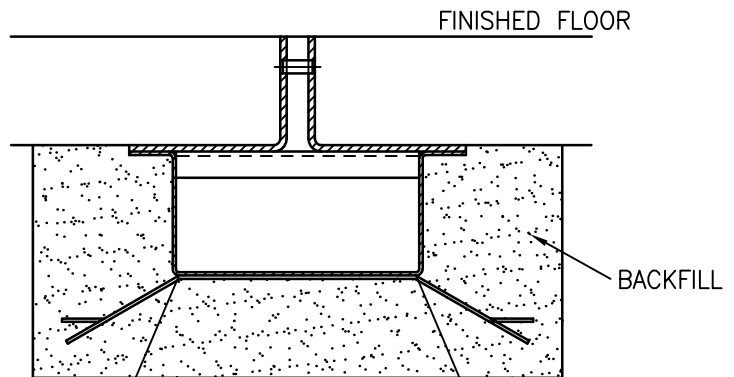
INSTALLATION GUIDELINES FOR HC/HCE CHANNEL.

Bolt channel sections together at flanges where applicable, sealing flange faces with sealant provided.

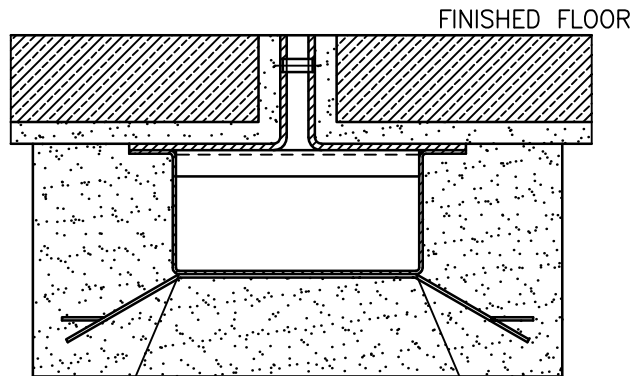
Place bedding in channel pocket and position channel in bedding such that the top face of the channel is flush with finished floor level. Support channel in this position until bedding is set.



Backfill pocket until backfill is level with flat area of channel.



Apply final floor finish.



© 2006

ISS. No.	2	3		DRAWN	DC	9-10-01	TITLE HC/HCE CHANNEL INSTALLATION	
C.N. No.	2887	3720		CHECKED				
DATE	9-10-01	7-7-06		APPRVD.				
		MATERIAL 50910016#2				SCALE NTS	DRG. No. INSTAL 18 SHEET 2 OF 2	ISSUE No. 3

WADE INTERNATIONAL LTD., THIRD AVENUE, HALSTEAD, ESSEX, CO9 2SX.

TEL: 01787 475151 FAX: 01787 475579

e-mail: tech@wade.eu web site: www.wade.eu