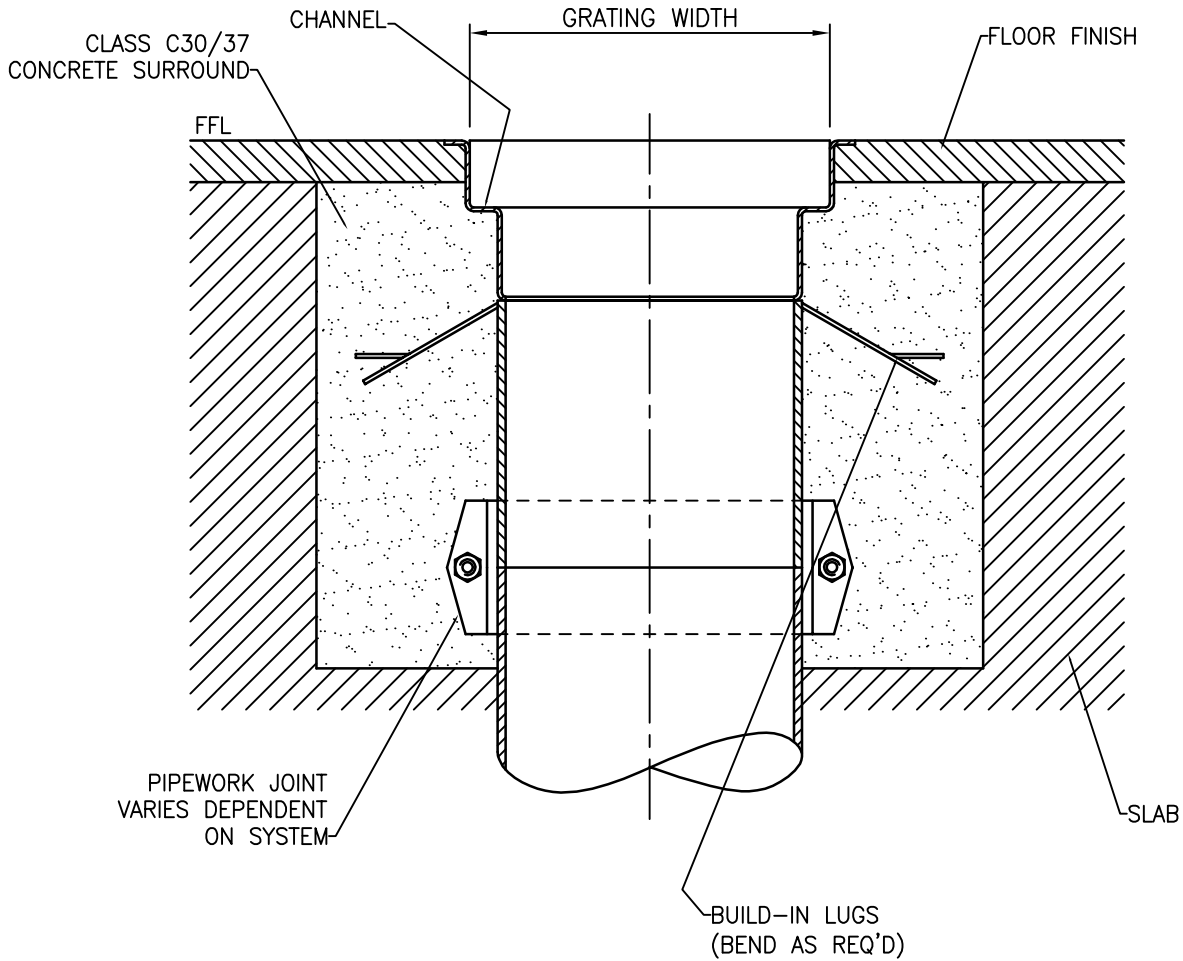



TYPICAL INSTALLATION IN A NON SHEET FLOOR FINISH



INSTALLATION

1. If there is more than one section to the channel, apply silicone sealant to jointing flange faces prior to bolting channel sections together.
2. Lower channel into position supporting where needed to ensure top edge is at FFL.
3. Make pipework connection.
4. Cut lengths of timber to suitable length to wedge across channel at approx. 500mm centres, thus preventing channel from being squeezed during pouring of concrete.
5. Lay weighted timbers across channel at FFL to prevent lifting during pouring.
6. Pour concrete ensuring that full support is given to the channel base and grating seat. (See also installation sheet 'Instal 52')
7. Fit gratings.

© 2012

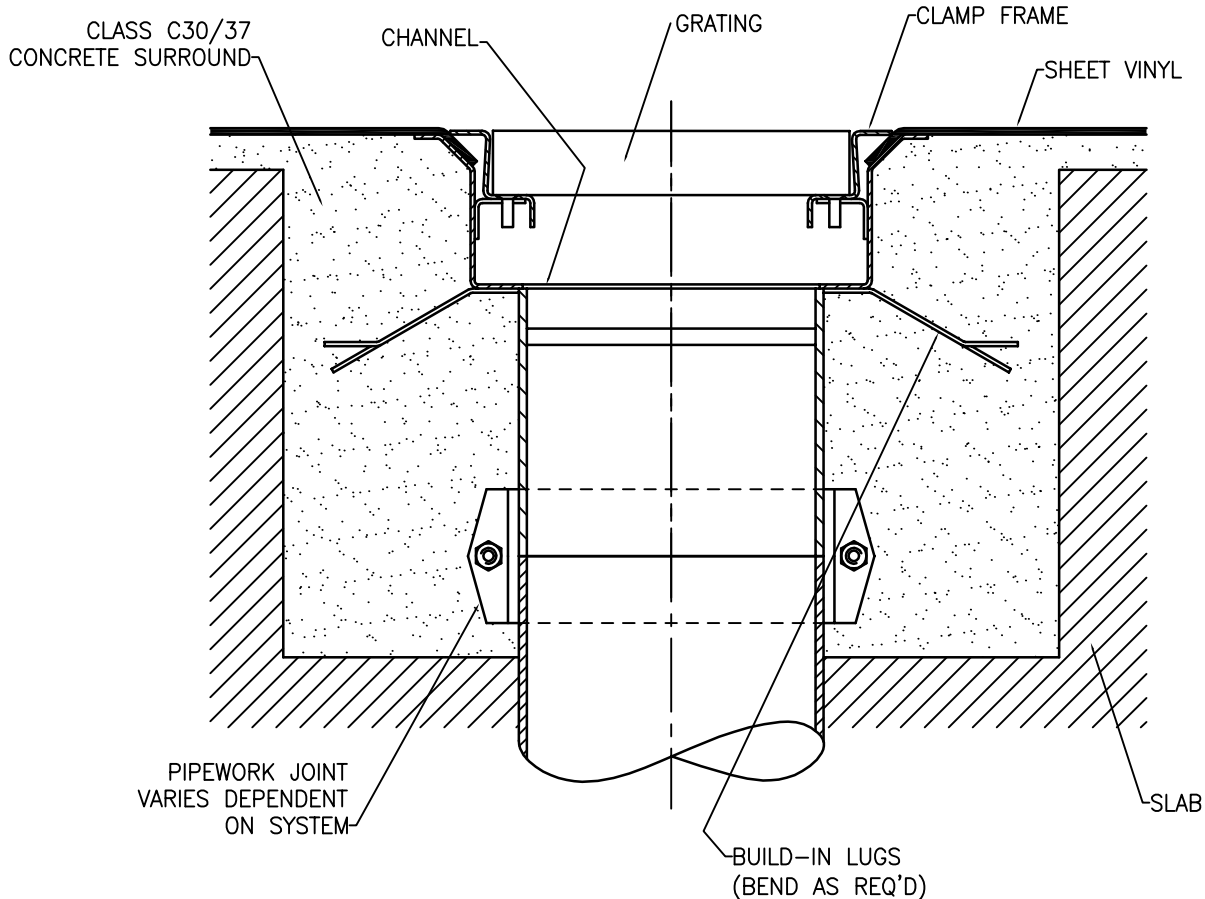
ISS. No.	5		DRAWN	DC	3-10-12	TITLE TYPICAL INSTALLATION OF STAINLESS STEEL FLOOR CHANNELS	
C.N. No.	4824		CHECKED				
DATE	18/12/14		APPRVD.				
		MATERIAL			SCALE	DRG. No.	ISSUE No.
		50910044#1			NTS	<b>INSTAL 7</b> SHEET 1 of 2	5

WADE INTERNATIONAL LTD., THIRD AVENUE, HALSTEAD, ESSEX, CO9 2SX.

TEL: 01787 475151 FAX: 01787 475579

e-mail: tech@wade.eu web site: www.wade.eu

TYPICAL INSTALLATION IN A SHEET FLOOR FINISH.




INSTALLATION - FOR TYPICAL INSTALLATION IN A TIMBER DECK SEE DRAWING 'INSTAL 52' SHEET 2

1. Remove gratings and clamp frame from channel.
2. If there is more than one section to the channel, apply silicone sealant to jointing flange faces prior to bolting channel sections together.
3. Lower channel into position, supporting where necessary to ensure top edge is at finished screed level.
4. Make pipework joint below channel.
5. Cut lengths of timber to a suitable length to wedge across channel width at approx 500mm centres, thus preventing channel being squeezed during pouring of concrete.
6. Lay weighted timbers across channel to prevent it from lifting during pouring.
7. Pour concrete ensuring that full support is given to the channel base and sides (See also installation sheet 'Instal 52').

VINYL INSTALLATION

1. Dress sheet vinyl into channel as illustrated and fix following manufacturers instructions.
2. Replace clamp frame and gratings.

© 2012

ISS. No.	5		DRAWN	DC	3-10-12	TITLE TYPICAL INSTALLATION OF STAINLESS STEEL FLOOR CHANNELS	
C.N. No.	4824		CHECKED				
DATE	18/12/14		APPRVD.				
		MATERIAL 50910044#2			SCALE NTS	DRG. No. <b>INSTAL 7</b> SHEET 2 of 2	ISSUE No. 5

WADE INTERNATIONAL LTD., THIRD AVENUE, HALSTEAD, ESSEX, CO9 2SX.

TEL: 01787 475151 FAX: 01787 475579

e-mail: tech@wade.eu web site: www.wade.eu